

Directions to Reactfast

Reactfast
Unit 113
Jubilee Trade Centre
130 Pershore St
Birmingham
B5 6ND

Contact: Andy Staveley
Telephone: 0121 666 4086

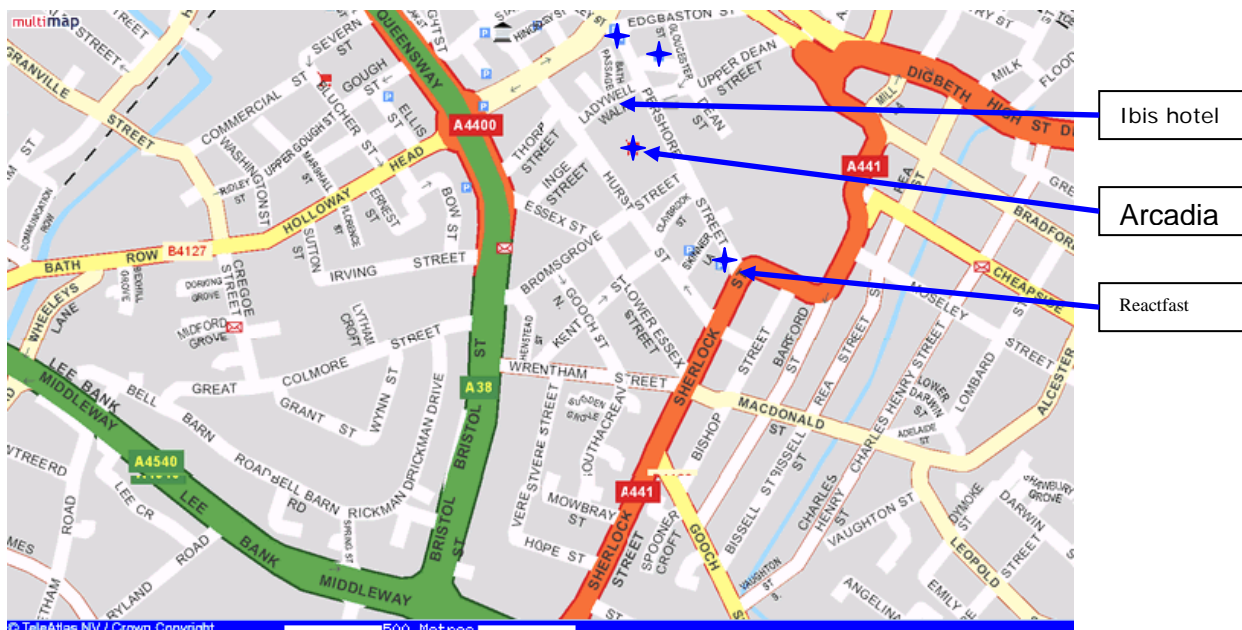
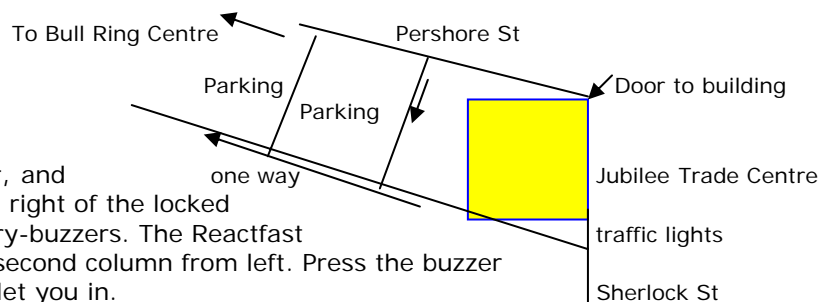
By car

The Jubilee Trade Centre is on the corner of Sherlock Street and Pershore Street, on the lhs if you are heading north up Sherlock, just where the road kinks to the left towards the Bull Ring centre. The building is a highly visible landmark: a huge old red-brick warehouse-style building. Just past the building, take one of the little roads to the left to bring you round to a couple of open-ground Pay and Displays, as well as a small multi story, all of which border the left (south) side of Pershore St, but are not directly accessible from it.

Access

Come to the front door, and cross the lobby. To the right of the locked doors is a panel of entry-buzzers. The Reactfast name is near the top, second column from left. Press the buzzer and somebody should let you in.

Come to Reception on the first floor.



Directions from New Street Station

Leave New Street rail station by the exit to the side of WH Smith. Cross the road at the pedestrian crossing and turn right. There is a stairwell on the left before you reach the bridge, follow this down to the lower level and exit the Bull Ring. Follow the road down, passing the Arcadian on the right. Jubilee Trade Centre is the big red-brick building at the end of this road.

Reactfast is about a 15 minute walk from New Street Station, and a 5-10 minute walk from Bull Ring Centre.

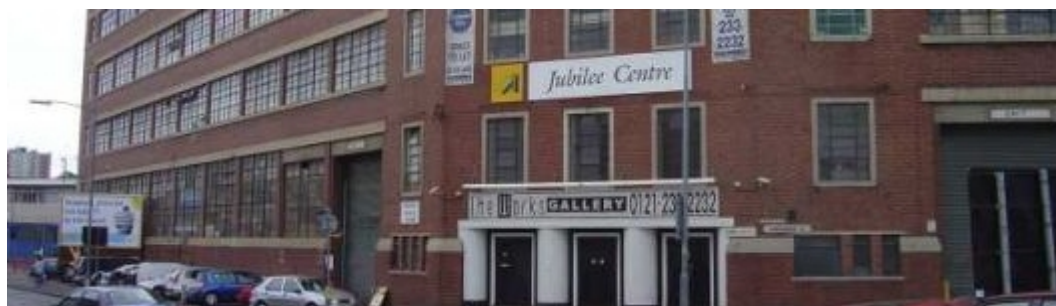
From Junction 6 of the M6 Motorway

Take the exit at J6 (Spaghetti Junction) towards Birmingham (A38) along the Aston Expressway. To your left is a lake and on your right in the distance is Aston Villa Football Ground. Stay on the Expressway, passing the famous HP Sauce factory on your left. Go straight on and over the Aston Expressway, a raised dual carriageway with the Aston University building on your left.

Soon you will enter a long tunnel. Keep going until you reach a second much shorter tunnel along Queensway and then take the left hand lane immediately upon your exit from the second tunnel. Exiting the tunnel you are now on Bristol Street. On your left you will see a Ford and Jaguar garage and you will be approaching a major crossroads with Mc Donalds on your right. Keep left. Take a left at this junction. Follow the road down to a large roundabout. Take the first exit left. Matthew Boulton College (a tall building) should now be on your left hand side.

This is Sherlock Street. Continue down this road passing Access Storage, a big blue building on your right. At the next lights by the White Swan take a left turn into Hurst Street. About 100 yards ahead on your right is the first open air car park, followed by a second. Covered car parking is also nearby.

Once you have parked, walk back towards the White Swan but turn left, as Hurst Street meets Sherlock Street. Jubilee Trade Centre is the big brick building on your left (shown below). The entrance is on the junction of Pershore Street and Sherlock Street.



From Junction 3 of the M5 Motorway

Take the exit J3 just after Frankley Services. Follow signs for Central Birmingham towards the city centre along the Hagley Road, passing through Quinton (Amber Tavern on right, Mc Donalds on the left) after a couple of miles TGI Friday to your right. Stay on this road all the way until you see the Plough and Harrow on your left, and then keep left as you come to Edgbaston Five Ways, a big roundabout. (Just before the roundabout you will see Tricorn House and a tall copper coloured building) Stay in the left lane and do not go under the tunnel. Keep left, but take the right hand lane once you have avoided the underpass. Take the third exit past Five Ways Shopping Centre and along Lee Bank Middleway. After a mile keep left. Mc Donalds is on your right. Do not go under the underpass. Cross over the junction where you will see Matthew Boulton College on your left and at this roundabout take the first exit. ***Follow instructions as above in italics.***

From the M42 Motorway

There are several routes from the M42 as it circles the city but the most common approach is for those having followed signs for the NEC and then have found themselves on the A45 Coventry road heading for Birmingham. This actually takes you straight to Digbeth if you head for the city. Reactfast is in Digbeth.

Access

Come to the front door and into the lobby of the Jubilee Trade Centre To the right of the locked doors is a panel of entry-buzzers. The Reactfast name is near the top, second column from left. Press the intercom buzzer, and somebody should let you in. **Come to Reception on the first floor.**